



St. Matthews, Kentucky Area History



St. Matthews & Surrounding Community, 1950—1953, 1st. Edition

This is one of many sections that contain information, photos, newspaper articles, internet items, etc. of the St. Matthews area. Many of the items came from Al Ring's personal collections but many people have helped and I have tried to give credit where I can.

The purpose of this "collection" was to create the history of St. Matthews, Kentucky. Being retired I now have time to do many of the things I have always wanted, this project is just one of them.

All graphics have been improved to make the resolution as good as possible, but the reader should remember that many came from copies of old newspaper articles and photos. Credit to the source of the photos, etc. is provided whenever it was available. We realize that many items are not identified and regret that we weren't able to provide this information. As far as the newspaper articles that are not identified, 99% of them would have to be from one of three possible sources. *The Courier-Journal*, *The Louisville Times* or one of the *Voice* publications. Books that we have used for some information include, *Randy, Cactus, Uncle, Ed and the Golden age of Louisville Television*, *Waggener High School Alumni Directory 1996*, *Waggener Traditional High School Alumni Directory 2007*, *Memories of Fontaine Ferry Park*, *St. Matthews The Crossroads of Beargrass* by Samuel W. Thomas, *St. Matthews, 25 Years a City Two Centuries a Community*, *St. Matthews 1960-1995*, *Waggener Lair's 1958 to 1962*, *The Holy Warrior, Muhammad Ali, Louisville's Own (An Illustrated Encyclopedia Of Louisville Area Recorded Pop Music From 1953 to 1983)*.

Please use this information as a reference tool only. If the reader uses any of the information for any purpose other than a reference tool, they should get permission from the source.



Courtesy of Bluegrass-St. Matthews Historical Society:



River Road looking East across Rail Road track-Zorn Avenue. 9/25/1938. Pastime Boat Club entrance would be near here. Chevron Station at this location now.

St. Matthews & Surrounding Community:

1940's

Courtesy of Bluegrass-St. Matthews Historical Society:



**North side of Westport Road, east of Washburn Avenue
Cargo Plane crash, WWII, Hite Farm
Where the farm and the Windhurst neighborhood in Windy Hills is located today.**



Courtesy of Bluegrass-St. Matthews Historical Society:



**Hubbard Lane North towards Rail Road tracks, 7/9/1942
Traffic from Shelbyville Road backs up to this point now!!!
Louisville Builders Supply would have been on the right side at the tower.
City of Richland on the left in the future.**

Courtesy of Bluegrass-St. Matthews Historical Society:



**“The Loop”, catch feeder bus into St. Matthews, transfer from Louisville downtown,
February 1946
Looking East, where Frankfort Avenue & Lexington Road come together
October, 1946**



St. Matthews & Surrounding Community:

1946

Courtesy of Bluegrass-St. Matthews Historical Society:



Courtesy of Bluegrass-St. Matthews Historical Society:



Kentucky Model Shop before move to Wallace strip stores, August, 1946

Courtesy of Bluegrass-St. Matthews Historical Society:



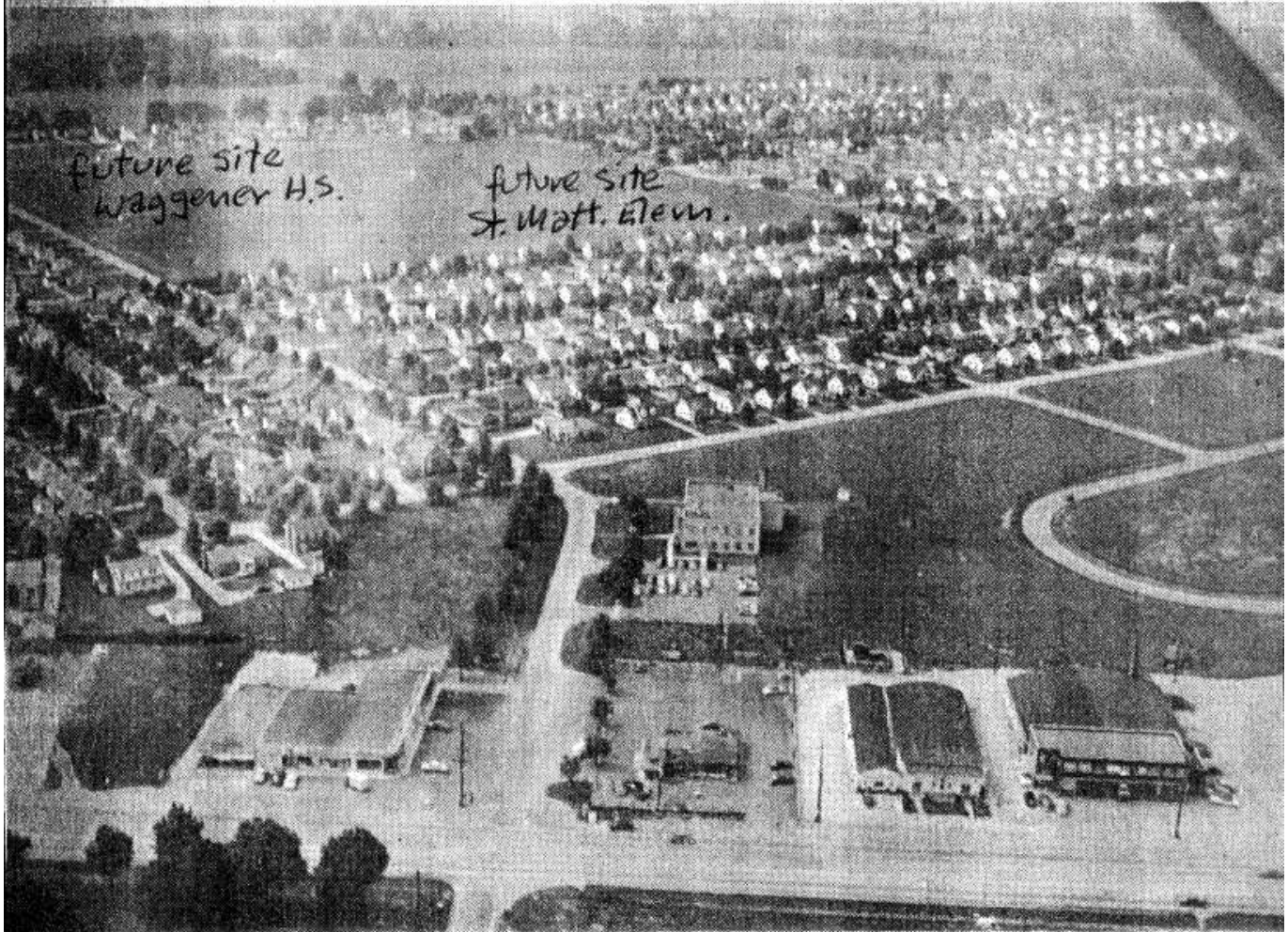
Original St. Matthews Baptist Church, January, 1947

Heart of St. Matthews, June, 1947

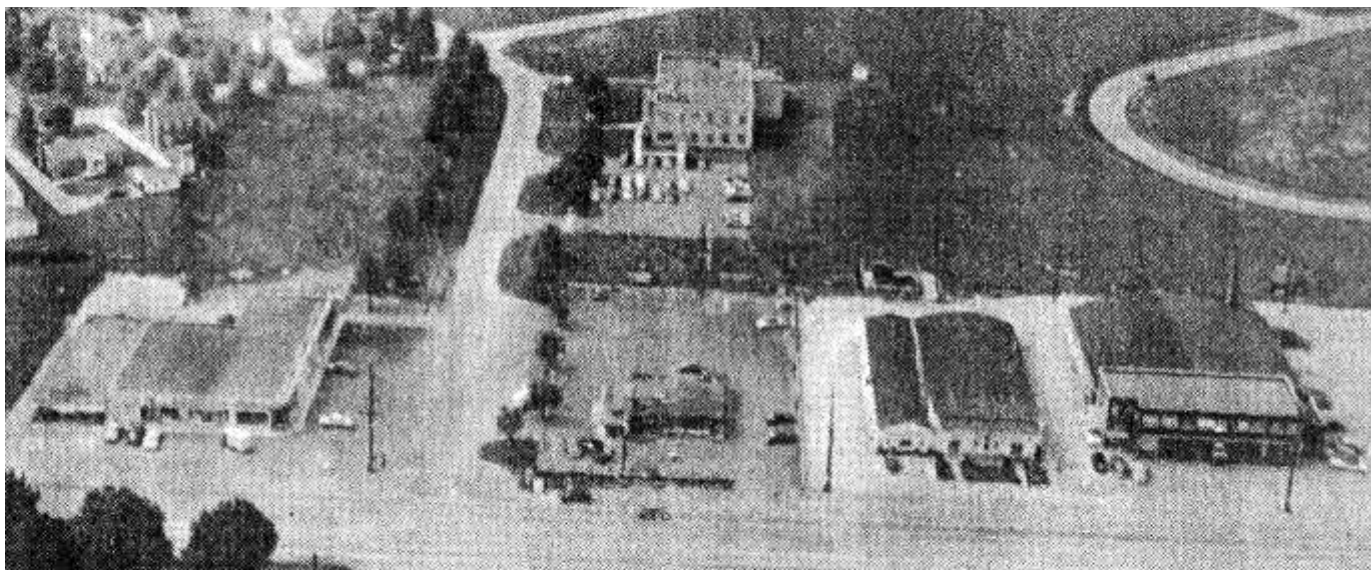


Courtesy of *The Voice-Jeffersonian*, April 9, 1970:

THURSDAY, APRIL 9, 1970, THE VOICE-JEFFERSONIAN, SECTION D, PAGE 3



THIS AERIAL VIEW of the Kentucky Farm Bureau office building (center) was taken in 1948. Shelbyville Road, intersected by Hubbards Lane, is in the foreground.

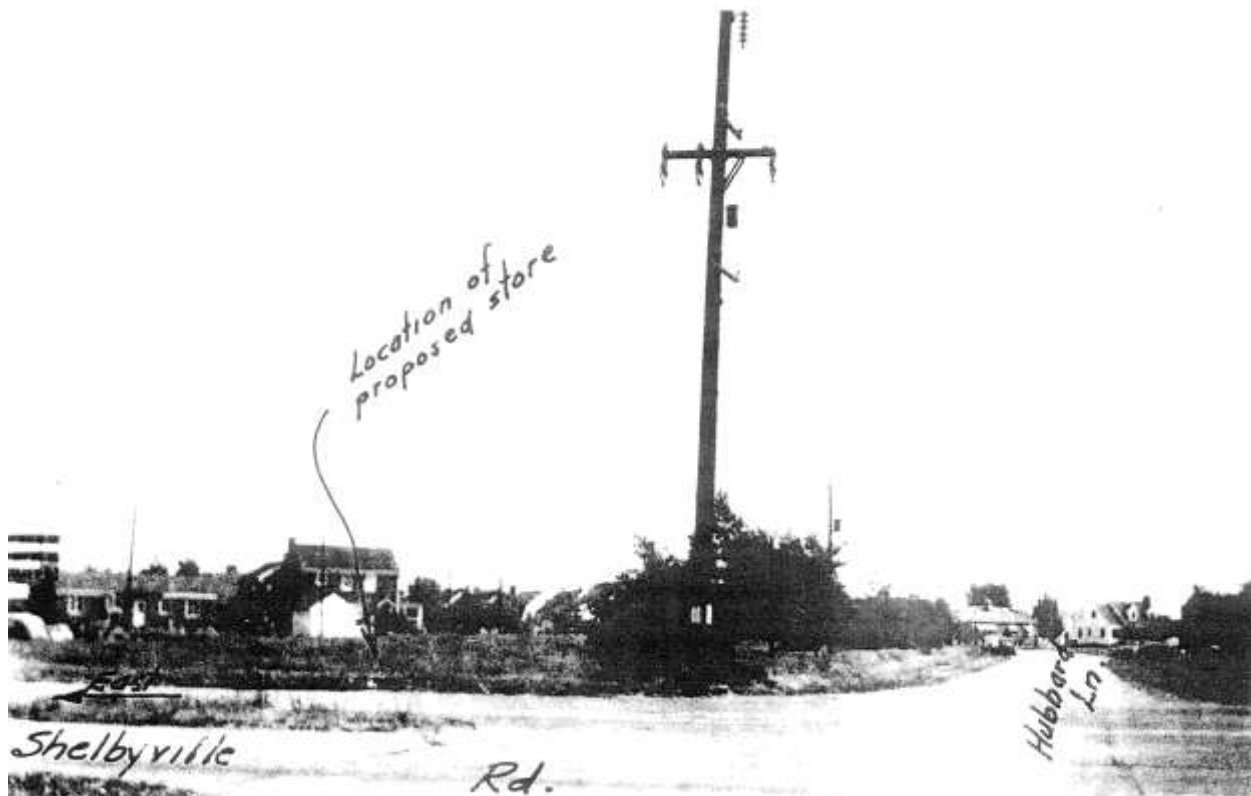


Courtesy of Bluegrass-St. Matthews Historical Society:



Beargrass Christian Church, April, 1948

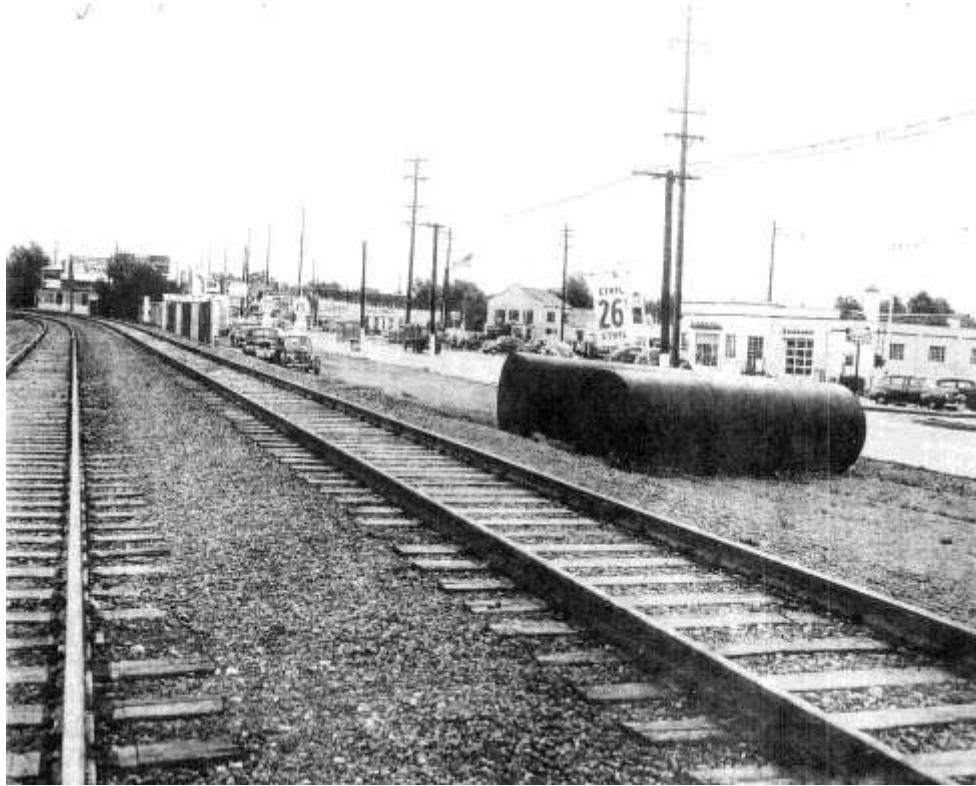
Site of Webb's Drug Store, June, 1948



St. Matthews & Surrounding Community:

1948/1949

Courtesy of Bluegrass-St. Matthews Historical Society:



Looking east, Frankfort & Lexington Road intersection, June, 1948

L & N Railroad Station, March, 1949



St. Matthews & Surrounding Community:

1949

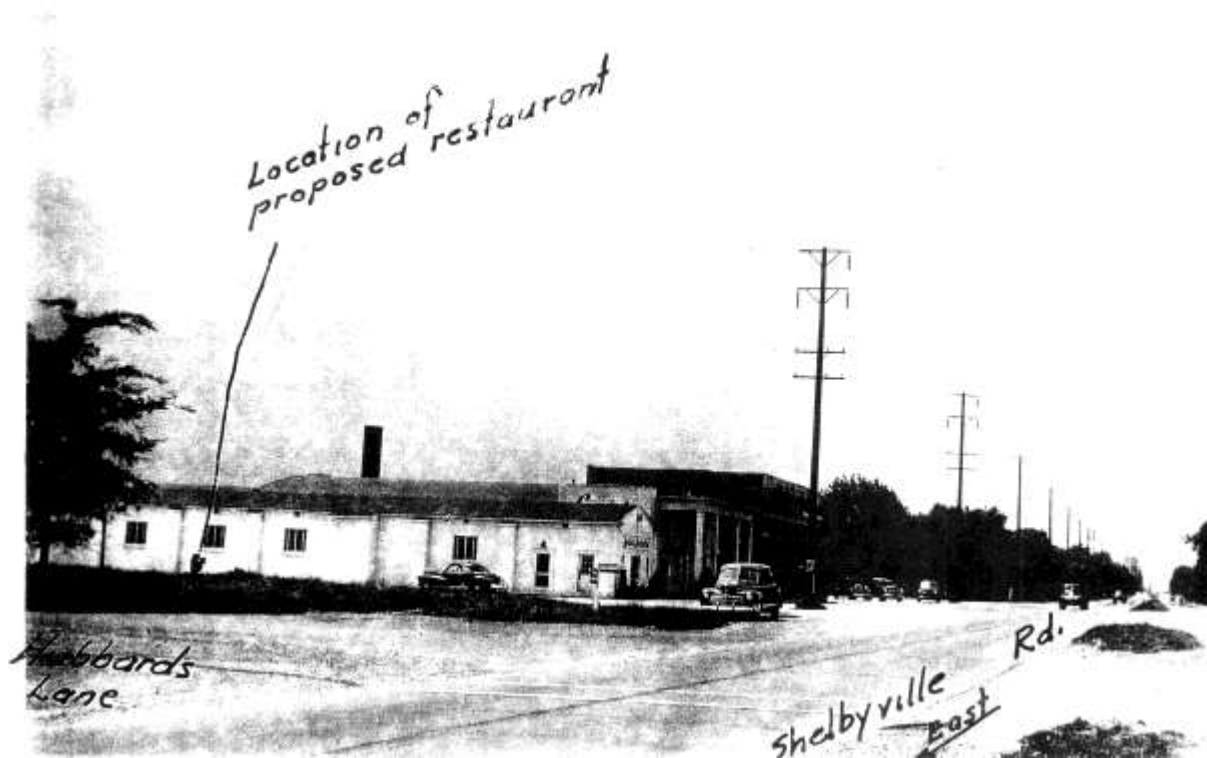
Courtesy of Bluegrass-St. Matthews Historical Society:



3937 Frankfort Avenue, May, 1949, Sponsored St. Matthews Little League teams

Site of Pryor's Restaurant

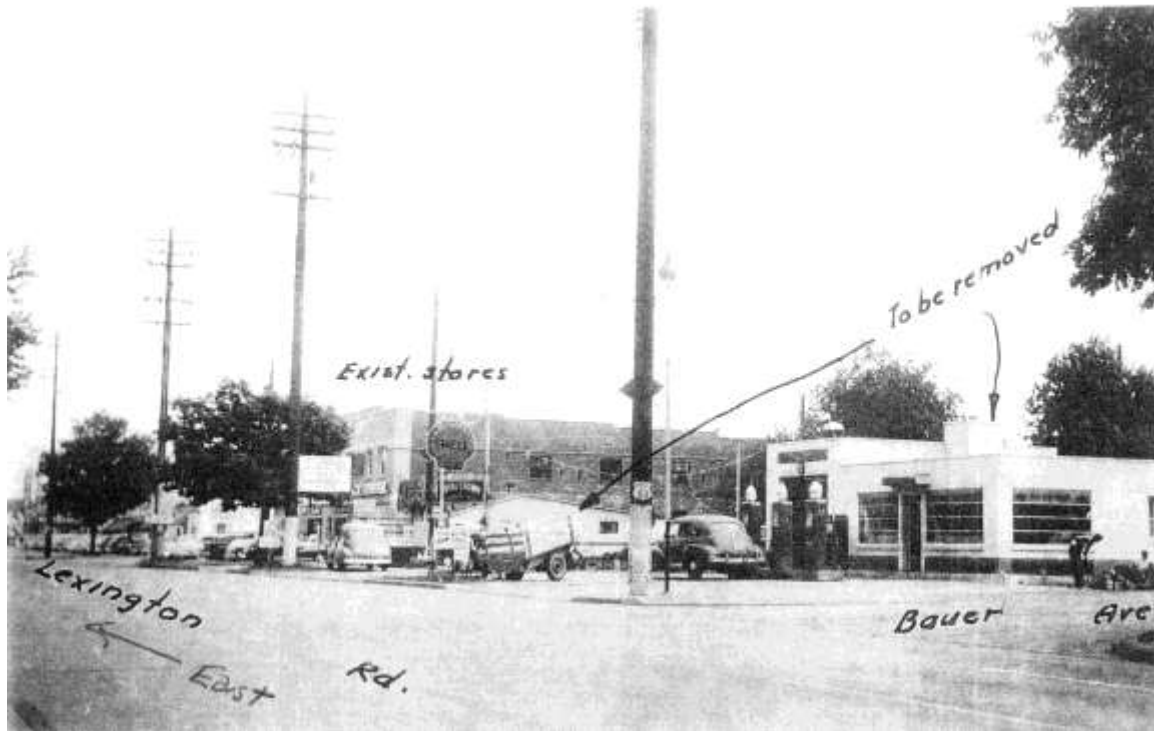
NOTE: As of May, 2008, the lot is the same, the entire building has been removed and the lot is empty.



St. Matthews & Surrounding Community:

1949

Courtesy of Bluegrass-St. Matthews Historical Society:



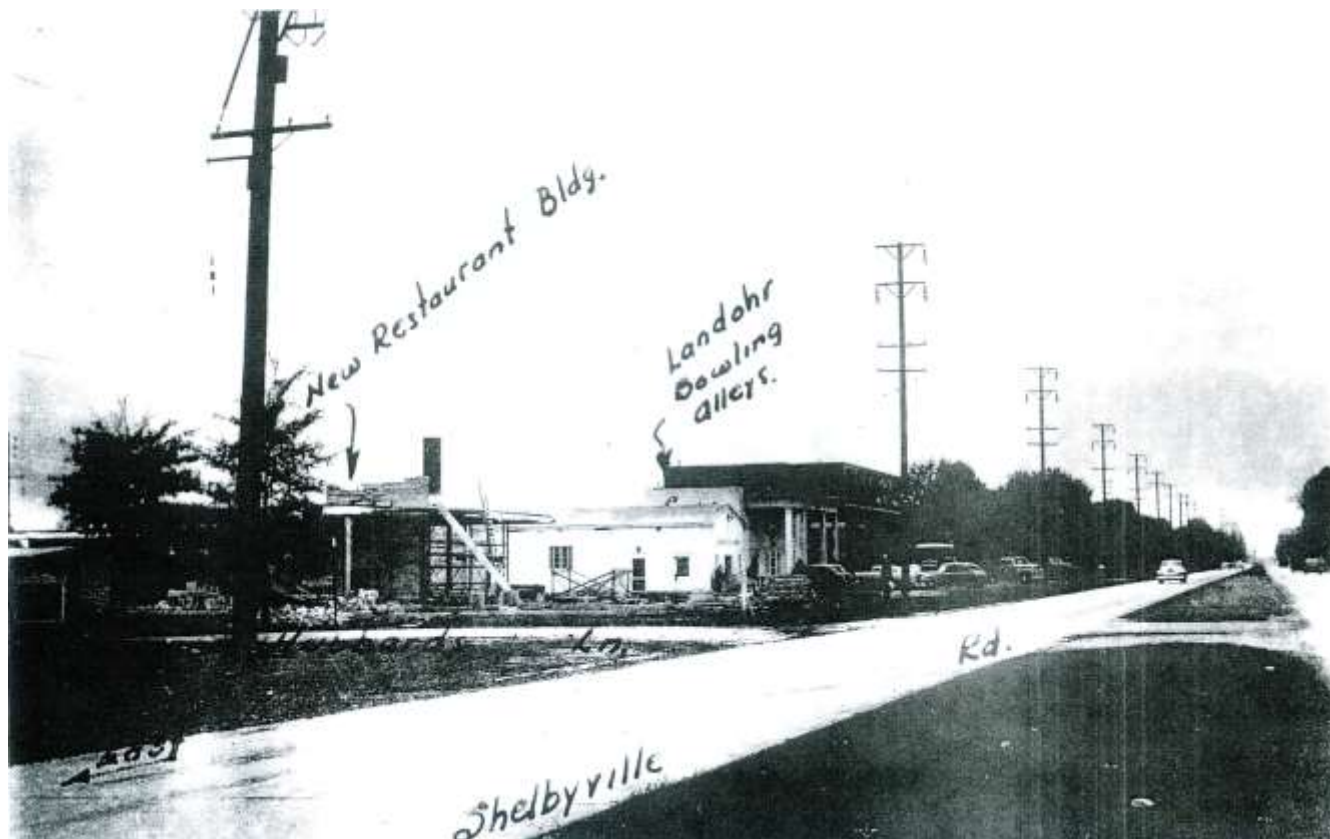
May, 1949

← East

October, 1949



Courtesy of Bluegrass-St. Matthews Historical Society:



Building Pryor's Restaurant, October 1949

ST. MATTHEWS

Your Community Newspaper

Vol. I, No. 1

July 14, 1949

5,000 Copies Each Week

POTATO FESTIVAL OPENS WEDNESDAY

W. H. Baker, publicity chairman for the Third Annual St. Matthews Potato Festival, announced that this year's festival would be the biggest and best yet. It begins Wednesday at 4 P.M., July 20th and continues through Saturday, July 23rd at the Festival Grounds on Shelbyville Road. Baker said: "It's a family affair for a great cause and there will be fun for everyone."

Clowns will be present, rides for the children, free entertainment and fun for the grown-ups. Daredevil Don Woods will ascend in a balloon to 1000 feet and jump out in a parachute. This will be free daily between 5 and 8 p.m. There will be truck loads of Gordon's Potato Chips dropped by parachutes each evening. Around 8 p.m. each evening free death defying acts will be presented by the great aerial artists "The Lehnbecks." "Your whole family will want to see these Dynamic dangerous acts high in the air. They are spine-tingling and a thrill to see," Baker said.

Free entertainment Wednesday, July 20th and Thursday, July 21st, nights by the famous Georgia Wildcats, with Clayton McMichen on the bandstand. Friday, July 22nd and Saturday, July 23rd, the Golden West Cowboys, featuring their leader Percie King will be on the bandstand for your entertainment. Another night feature will be a trained dog act, that is a top notch attraction.

There will be rides, games and hundreds of prizes, so make your plans now to attend. The proceeds go for recreation and a community center.

A spectacular flower show will be held Thursday, July 21st, at 2

p.m. You may enter any flower you wish, provided you hurry, Baker announced, because this part of the program is creating a lot of interest since the sponsor, The Women's Club, announced the judges and prizes.

The major prize will be a 1949 Buick; a live baby beef, custom cut, frozen and stored in a 6 cu. ft. locker is the second prize. The major prize will be drawn Saturday night. Ten other prizes will be awarded with drawings nightly.

Saturday, July 23rd, will be Governor's Day, with Gov. Earle Clements and Lt. Gov. Wetherby invited to participate in the festivities. A gigantic parade will be held Saturday with over 50 cars, trucks and floats. Of course, clowns and a lot of fun goes along with the parade. The route of the parade will be announced within the next few days.

The Man-on-the-Street broadcast through WEAS, featuring the well-known Pete French for Strietmann Biscuit Co., will start Monday, July 18th in St. Matthews. Go over and appear on the broadcast daily at 2:45 p.m.

Plenty of free parking space is available this year. Come early and stay late, because it's the biggest event ever sponsored in St. Matthews. Festival Headquarters are located at the Y.M.C.A., 145 St. Matthews Avenue, Belmont 3232.



Uncle Hiram, juggling clown featured daily at the Potato Festival.

Name Your Paper And Win \$100.00

What is the name of your paper? It hasn't one. We are going to ask you to give us a name. A grand prize of \$100.00 is waiting for the person who writes in the winning name. The contest will run for four weeks and at the end of this period four of your local business men will judge the entries and will choose the winning title. In case of duplicate entries the first letter post-marked will win. There is nothing to buy and you will be under no obligation to this publication. Originality will be a determining factor as will adaptability. Everyone has a chance to win, just write your letter to Advertising Publishers Inc., 219 W. Ormsby, and win a hundred dollars for a summer vacation, a new fall suit or a nice little nest egg in the bank.

Ampitheater Opens Season This Week

Song of Norway, the life story and songs of Edward Grieg is the opening presentation of the Iroquois Ampitheatre. The all-star cast featuring Robert Shafer, Ralph Magelson and Nancy Kenyon. Song of Norway should be a tremendous hit and start the season off in style. The production is under the direction of Dennis Dufor, with sets by Rollo Wayne. Curtain time is 8:30 p.m.

Methodist Caravan Coming Saturday

Rev. Marvin Whitmer, pastor of the St. Matthews Methodist Church announces the arrival of the Methodist Caravan, coming to St. Matthews, Saturday, July 16th. The caravan's members are Miss Sara Boggs, LaGrange, Ga., Betty Kay Jones, Spartanburg, So. Carolina, Mr. LaNella Nelson, Baytown, Texas and Mr. William McLachlin of Philadelphia, Pa. This group and their leader or adult counselor, Freda Whitfield, a member of the (Continued on page 2)

Judge Ford Approves New Shopping Center

A \$500,000 shopping center can now be built on Brownboro Road since Circuit Judge William H. Field upheld the ruling of the Planning and Zoning Commission on six acres at Brownboro Road and Rudy Lane. The land involved is owned by Joe Wilhoite, Prospect and John A. Walker, 325 Boone Avenue. The plans include one story stores and a large parking lot. The initial questions of the suit were devaluation of home value and increase of traffic problems. The suit was brought by Mrs. Charles Blakely, Mrs. C. B. Rosten, William Dressel, J. Paul Keith and John F. Cretel. Robert P. Hobson, attorney for the home owners plans to appeal the decision of the Court of Appeals.

Eagles Convention Begins Friday, July 15

The Eagles of Louisville and St. Matthews are planning a big reception for all delegates and visitors to their annual convention beginning Friday, July 15th. Members will come from the 23 areas of the state to meet at the Kentucky Hotel. The principle speaker will be Mr. M. L. Brown, managing organizer for the Tri-State District. He is well known throughout the country for organizing the Eagles Memorial Foundation. This group helps to support, educate and supply medical aid to all orphaned children of Eagles who gave their lives in the past war. Mr. Henry V. Krawith, Kentucky State President will preside at the meetings.

"The Fellow Next Door"

What your neighbor thinks about the sewer situation.

BY JAMES MEACHAM

"My opinion of this whole sewer situation in St. Matthews," said Mrs. C. E. Payne of 734 Browne Lane, "is that whoever signed the contract didn't read it first."

Mrs. Payne, like so many other residents of the St. Matthews area has had her yard covered with dirt, her drainage ditch filled so that her garden washes away whenever it rains, and numerous other inconveniences. The Payne's have received bids ranging from \$238 to \$36 for connecting their plumbing to the main line. "The great difference in the two prices," said Mrs. Payne, "makes me think that some of these contractors are taking unfair advantage of us."

When asked if she thought the contractors had done a reasonably good job under the circumstances, Mrs. Payne declined to reply saying, "I think that's a little out of a housewife's line, but I do not think

that the contractors have been treating the people right."

Mrs. Payne also said that she has never read the contents of the contract or talked to anyone who has. She would like very much to see it made public so the people could see whether or not the contractors were keeping within its limits.

Mrs. Kenneth Worcester of 3690 Dayton Ave. has the following opinion of the sewers: She says, "I think the sewers would be worth anything we have to go through to get them, but the contractors seem to be taking advantage of the situation."

The Worcester's never put in a septic tank when they built their house, as the sewers had been promised in January and they weren't to move in until February. The sewers were connected the last

(Continued on Page 4)

Lexington Junior League Horse Show Closes Saturday

Lexington's Junior League Horse Show is in full swing this week. Always a fine show and a must for exhibitors, Lexington is even bigger this year. Mrs. Waller Jones is chairman of the show and Mrs. Clarkson Beard, Co-Chairman, Thomas Clure, well-known state fair manager is running the affair. Exhibitors from almost every state in the Union are competing for the \$10,000 in prize money. It is a very big horse show and "take a blue in Lexington." The final night, Saturday, will feature the championship live gallop stakes.

Greetings, St. Matthews

This is the first edition of your community paper and I feel introductions are in order. Your weekly newspaper is published by Advertising Publishers Inc. The active members of this corporation are Clifford L. Slater, who is associated with Slater and Gilroy, Printers, and James K. Van Arsdale, former production manager of the Up-To-Date Distributing Co.

It is your newspaper; we are merely servants of the people of St. Matthews. It is up to you to determine the editorial policy of the paper. The publication will be non-political, non-religious, neither for nor against annexation. We are not sponsored by any organization, but we hope to have the approval of all civic groups. By this policy you know that we have no axe to grind. We would appreciate your opinions on all matters and will publish any letters received on controversial issues as long as they pertain to the welfare of the community and remain within the bounds of good taste. Patronize your advertisers, without their support there could not be a newspaper in St. Matthews.

St. Matthews & Surrounding Community:

Late 1940's

Courtesy of Mickey Lunsford (63):

Pictures my Dad (Cecil Lunsford) took of St. Matthews when they were putting in the sewers. I guess the time was in the 50's. There was no date on the pictures. It shows Gerstle's Place, the Eline Building and Frankel's Drug store. Dad was a Musician, Pharmacist & Professional Photographer.



St. Matthews & Surrounding Community:

Late 1940's

Courtesy of Mickey Lunsford (63):

Pictures my Dad (Cecil Lunsford) took of St. Matthews when they were putting in the sewers. I guess the time was in the 50's. There was no date on the pictures. It shows Gerstle's Place, the Elme Building and Frankel's Drug store. Dad was a Musician, Pharmacist & Professional Photographer.



St. Matthews & Surrounding Community:

Late 1940's

Courtesy of Mickey Lunsford (63):

Pictures my Dad (Cecil Lunsford) took of St. Matthews when they were putting in the sewers. I guess the time was in the 50's. There was no date on the pictures. It shows Gerstle's Place, the Eline Building and Frankel's Drug store. Dad was a Musician, Pharmacist & Professional Photographer.



St. Matthews & Surrounding Community:

Late 1940's

Courtesy of Mickey Lunsford (63):

Pictures my Dad (Cecil Lunsford) took of St. Matthews when they were putting in the sewers. I guess the time was in the 50's. There was no date on the pictures. It shows Gerstle's Place, the Eline Building and Frankel's Drug store. Dad was a Musician, Pharmacist & Professional Photographer.



St. Matthews & Surrounding Community:

Late 1940's

Courtesy of Mickey Lunsford (63):

Pictures my Dad (Cecil Lunsford) took of St. Matthews when they were putting in the sewers. I guess the time was in the 50's. There was no date on the pictures. It shows Gerstle's Place, the Eline Building and Frankel's Drug store. Dad was a Musician, Pharmacist & Professional Photographer.



St. Matthews & Surrounding Community:

Late 1940's

Courtesy of Mickey Lunsford (63):

Pictures my Dad (Cecil Lunsford) took of St. Matthews when they were putting in the sewers. I guess the time was in the 50's. There was no date on the pictures. It shows Gerstle's Place, the Eline Building and Frankel's Drug store. Dad was a Musician, Pharmacist & Professional Photographer.



St. Matthews & Surrounding Community:

1950's

Courtesy of St. Matthews 1960-1995:

Previous City Halls



3937 Kennison Avenue
(Mayor James Noland's home)
1950-1954



203 Post Office Building
Breckenridge & Willis avenues
1954-1955



The Colonial Building
131 Breckenridge Lane
1955-1957



4003 Frankfort Avenue
1957-1960



201 Thierman Lane
1960-1994



Courtesy of St. Matthews, The Crossroads of Beargrass, by Samuel W. Thomas, 1999. Though this photo is from May 7, 1946 the A & P was with us for many years. However the photo to the left shows why we had a new store in 1946. The A & P burned to the ground in May 1945. Left photo from Al Ring, and one of Louisville's newspapers.

By Times Staff Photographers
Smoldering ruins of grocery store after fire. Fire started in the St. Matthews A. & P. super-market at 3125 Lexington Rd., swept before day-break. The store for three hours.

St. Matthews & Surrounding Community:

Very late 1940s Early 1950s

Courtesy of Trent Hutcheson (61):

Cherrywood Village Development

The Cherrywood Village development which became the 6th class city of Chenywood Village was where we lived from 1949 until we moved to Beechwood Village in 1955. It was simply a great place to grow up. Children were everywhere and almost no moms worked so you weren't very far from help or discipline wherever you were.

The village was composed of Leland Road, Brookfield, Elmwood and Gilman. Bounded on the east at that time by Cherrywood Road and Massie Ave. on the south. Clover Lane ran north/south. Entry was from Massie or St Matthews Ave. Also from Chenoweth Lane if entering into the older part of Elmwood etc.

I believe the City wound up having 147 or so homes. I think all of them had children and we hit every house on Halloween without any concerns for our safety. We started school at Greathouse and moved to Stivers when we hit the 4th grade.

The area east of Cherrywood road was open and was owned by the County School Board I think. It was leased to the YMCA where they had a "Kindercamp" day camp for preschool children. I worked there several summers after moving to Beechwood . I made \$14.50 a week and thought I was in "tall cotton" as they say here is Mississippi.

This area was later sold and privately developed into homes. Holy Trinity church was there and I think the elementary school was at that time as well.

The first pictures were taken in the winter of 1948. I was about 5 years old. Picture A: My mother and I (I love that coat with the shoulder pads and big fur collar). I had my "snow suit" on. I looked like that kid in "A Christmas Story" who couldn't move once wrapped up. I made a lot of noise when I walked and I was glad when I outgrew it. Our 1939 Ford is in view as well. My father's shadow can be seen as he stood to take the photos with a Brownie Reflex camera which I still have.

B, C, D Different views of the lot at 4024 Elmwood. I think this is the view looking south towards Gilman. The houses in the background I think on are Massie. There were apparently no houses yet on either side of Gilman.

E, F, A few months into 1949. The house is well underway. We are walking up the planks to view the inside. Must have been warmer since we don't seem to be dressed as heavily. I cannot read the sign on the lower right. I suspect there is a way to raise the resolution to make it readable but I don't know how to do that.

Picture G is about the same as the previous pictures. I think the figure in the front door is my Grandmother.

H, I, Summer 1949 house now complete but no grass. Yard was seeded in Bluegrass. He rolled it flat with a large hand pushed roller. By now other houses were complete as well. The one next door was owned then by a Rabbi Perley and his wife. He gave me my first radio, a small Emerson which got hot enough on top to melt a candle. I know that because I did it. On the other side was a Catholic family. Diversity was nothing new for us!

J. Now this will take some explaining as to why I included it. Note that now we have a 1949 Ford "with overdrive" my Dad said many a time. It was bought so I would have a nice car to ride in to school. He rode the bus to the 9th and Broadway office of the L&N where he worked until about 1954 when the American dream hit us with a second car. He would walk to catch the famous "Massie bus" then transfer in St Matthews to get downtown. I am pictured in my graduation gown from Mrs. Crawley's kindergarten which met in the old St Matthews National Guard Armory.

Now note the stones that line the patio and make up the partially visible fireplace and grill (never used for either). These were cobblestones from the wharf at the foot of 3rd street. At that time someone decided it was not worth keeping and they commenced to tear it up and offer the stones to anyone willing to haul them. We filled the trunk of the 39 Ford several times. These stones also lined our driveway at one time. I still have one of these stones in my yard here . Heavy!!

K. Faded photo looking south into the backyard garden with me doing something. Now the block on Gilman is pretty well filled. The house on the right-partially cut off, was where Sharon McGloshen (61) lived. I have been in touch with her and she lives in West Virginia.

L. Mike Skelton and me with my first bicycle - big tires ,chrome fenders-bought used by my Dad for \$5.00. Later it sported streamer handle grips, reflectors, horn, battery light and the inevitable playing cards clipped to the wheel . Multiply that by several dozen and you get the idea of the noise we created much to the discomfort of some of the neighbors. The view is looking down Elmwood to the NE. I think the houses across the Street may be the Rakestraw's and Pattersons. A family named Adams was also there too. Roads and driveways are still gravel. I guess the time was about 1951 or 1952.

M. On our patio, View is to the SE towards the rear of the houses of Gilman. Still a clear view; no hedges or trees , just low wire fences-easily climbable.. Cherrywood road would be just out of the picture.

N. the Elmwood Gang as our parents called us. I guess this is about 1950. Looking south towards the rear of the Gilman homes.

L to R Trent Hutcheson (61) Kit George head (60?) Mike Skelton (62 I think) and David Love (60) I think one of the houses in the rear was Kit's.

O. A few years later at a birthday party at David Love's at 4032 Elmwood. L to R the desperadoes are: Trent Hutcheson, David Love, Mike Skelton and Frank Lovell. Frank lived a few doors down from me across the street. Penn Watts, the neighbor hood bully, lived 2-3 doors from me towards Clover lane. Someone told me he still lives in that house. Just for the record I did beat him up one time after ambushing him when he climbed our fence.

St. Matthews & Surrounding Community:

Very late 1940s Early 1950s

Courtesy of Trent Hutcheson (61):

Cherrywood Village Development



A



B



C



D



E



F



G



H



I

St. Matthews & Surrounding Community:

Very late 1940s Early 1950s

Courtesy of Trent Hutcheson (61):

Cherrywood Village Development



J



K



L



M



N



O

St. Matthews & Surrounding Community:

Very late 1940s Early 1950s

Courtesy of Trent Hutcheson (61): Cherrywood Village Development

Halloween party given in the basement of our house at 4024 Elmwood in Cherrywood Village. Probably was about 1950.



First row, left to right: Gary Henry, lived on Gilman on Cherrywood road end. Mike Skelton (62) lived on 4032 Elmwood, Joe Blunt next door to us at 4022 Cherywood, Holly Valentine Gilman Avenue.

Row two, left to right: In chair no known, Frank Lovell (61) Elmwood Avenue, Shirley Valentine sister of Holly.

Back left behind seated girl is Pen Watts (61) Elmwood, next in the clown outfit is Micheal Covitt a family friend, who later became successful veterinarian. Next is Kit Georgehead (60) in cowboy hat, Trent Hutcheson, Mary Ellen Blunt sister of Joey. In front of her I think is Ann and Tootsie Kaelen (spelling??). They lived on Elmwood on the opposite side from us toward the Cherrywood road end.



Same group from different direction. The man to the right is Lee Devine. A close family friend and long time businessman in Louisville. He has passed, but ask anyone at the Salvation Army and they probably could tell you who he was. He became a millionaire after growing up with nothing-on "the point" in downtown. The Salvation Army fed him and he never forgot that. He walked to U of L; after finishing owned a succession of businesses, including a filling station, and wound up owning a string of nursing homes (St. Matthews Manor was one of them.) His wife Ruth was a long time owner of the Alex Adams Modeling Agency.

St. Matthews & Surrounding Community:

Very late 1940s Early 1950s

Courtesy of Trent Hutcheson (61): Cherrywood Village Development

Cherrywood Village's "TV Station"

One of the productions.

Photo 1: Mike Skelton (62) lip synching to a Dean Martin recording. Backed by David Love (60) on a cardboard fiddle and Trent Hutcheson (61) on a ukulele.

Photo 2: Trent Hutcheson on the accordion. The song was more than likely Lady of Spain. A perfect showboat song for the accordion. Lots of notes and bellows action.

Photo 3: A commercial in progress. Trent Hutcheson (61) and David Love (60) touting a chocolate milk mix. The cameraman I remember only as Charles. He was the grandson of a friend (Lula Lorch) of my Grandmother (Anna Trent). He would come to visit her in the summers and we usually wound up doing some things together. I don't recall where he was from.

Photo 4 left to right: Charles ????, Trent Hutcheson (61), Mike Skelton (62), David Love (60), Doris Zibart (61) whom I was sweet on in the first grade to the tune of Valentine candy and all. She is married to Butch Mathis (61).

Photo 5: Mike Skelton doing a commercial with David Zibart as the "boom" mike operator.



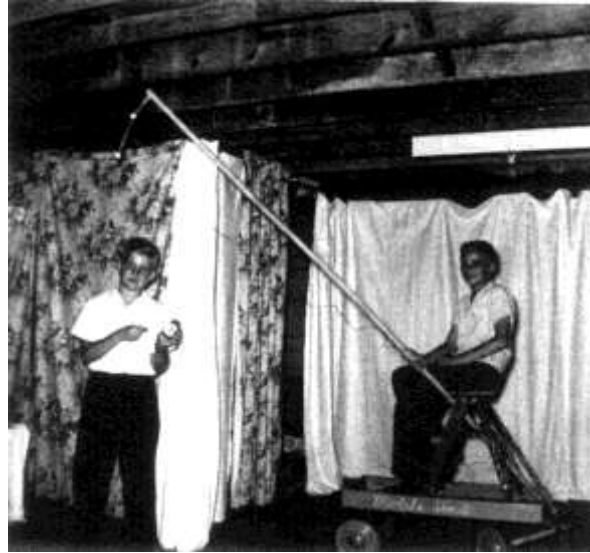
Photo 5 next page:

St. Matthews & Surrounding Community:

Very late 1940s Early 1950s

Courtesy of Trent Hutcheson (61):

Cherrywood Village Development



The Accordion Band photo-

to.

Taken about 1951. This was when Cot Haynes was still working for Shackletons. He later started his own accordion studio downtown and had a neon sign of an accordion which I think looked like an accordion opening and closing.

Trent Hutcheson (61) is third from the left on the front row. On the back row, second from left I believe is Mary Carol Coons (60).



St. Matthews & Surrounding Community:

1950s and Earlier

Courtesy of Sidney Eline Jr. of Eline Realty Company:



About 1952, 707 Circle Hill Road



Hycliffe Avenue



Breckinridge Lane, early 1950s



Breckinridge Lane, about 400 block



Dutch colonial



West of Breckinridge Lane on Hycliffe Avenue

St. Matthews & Surrounding Community:

1950s and Earlier

Courtesy of Sidney Eline Jr. of Eline Realty Company:



Corner of Wallace & St. Germaine



Unknown



The St. Matthews Public Works Department getting



Corner Norbourne Blvd., Fisher House, late 1930's



House on Norbourne Blvd. owned by Shelton Arterburn. May have been taken in late 1930s



Hycliffe and Wallace, around 1938

St. Matthews & Surrounding Community:

1950s and Earlier

Courtesy of Sidney Eline Jr. of Eline Realty Company:



House under construction at 3815 St. Germaine Court



Hycliffe Avenue taken in late 1930's



3717 St. Germaine Ct, sold new for about \$9,500 sold in 2003 for \$200,000



3705 St. Germaine Ct. constructed in mid 1930's and sold for around \$9,000.00 sold in 2006 for \$345,000



3711 St. Germaine Ct., sold in 2005 for \$237,500, three bedrooms, two baths, new windows and big deck



190 Colony Way that is now a parking lot. The Colony Way Barber shop was in the first store on the left. Voice newspaper office was on the second floor. Breeland Realty torn down building in 1980's.

St. Matthews & Surrounding Community:

1950s and Earlier

Courtesy of Sidney Eline Jr. of Eline Realty Company:



First Kroger In St. Matthews



111 S. Hubbards Lane, 1957



111 S. Hubbards Lane, 1957



July 8, 1955, look at top of Bacon's this is when they were adding the third floor to the building

**Forty-One Years
Of Selling
Real Estate
In St. Matthews**



Since 1911 the Eline Realty Co. has been selling Real Estate in the St. Matthews area. We have developed over fourteen beautiful sub-divisions.

It pays to deal with a St. Matthews Real Estate Firm and Eline Realty Co., has forty-one years experience.

ELINE REALTY CO., INC.
"ST. MATTHEWS FIRST REAL ESTATE OFFICE"
Residential and Business Development Specialists
On the Ground Floor, Eline Bldg.—2012 Frankfort Ave. DE. 5612

The Voice Of St. Matthews, February 14, 1952

St. Matthews & Surrounding Community:

1950

Courtesy of Al Ring:



Courtesy of *St. Matthews, The Crossroads of Beargrass*, by Samuel W. Thomas, 1999. Caption—National Oil Corporation service station pumping Conoco gasoline on Shelbyville Road east of Meridian, which runs diagonally in the background, 1950. ZV135-50U, Jefferson County Historic Preservation and Archives.



St. Matthews & Surrounding Community:

1950

Courtesy of *St. Matthews, The Crossroads of Beargrass*, by Samuel W. Thomas, 1999. Caption- 1950 Aerial view of St. Matthews triangle showing Wallace Center under construction. R. G. Potter Collection 5236, University of Louisville Photographic Archives.



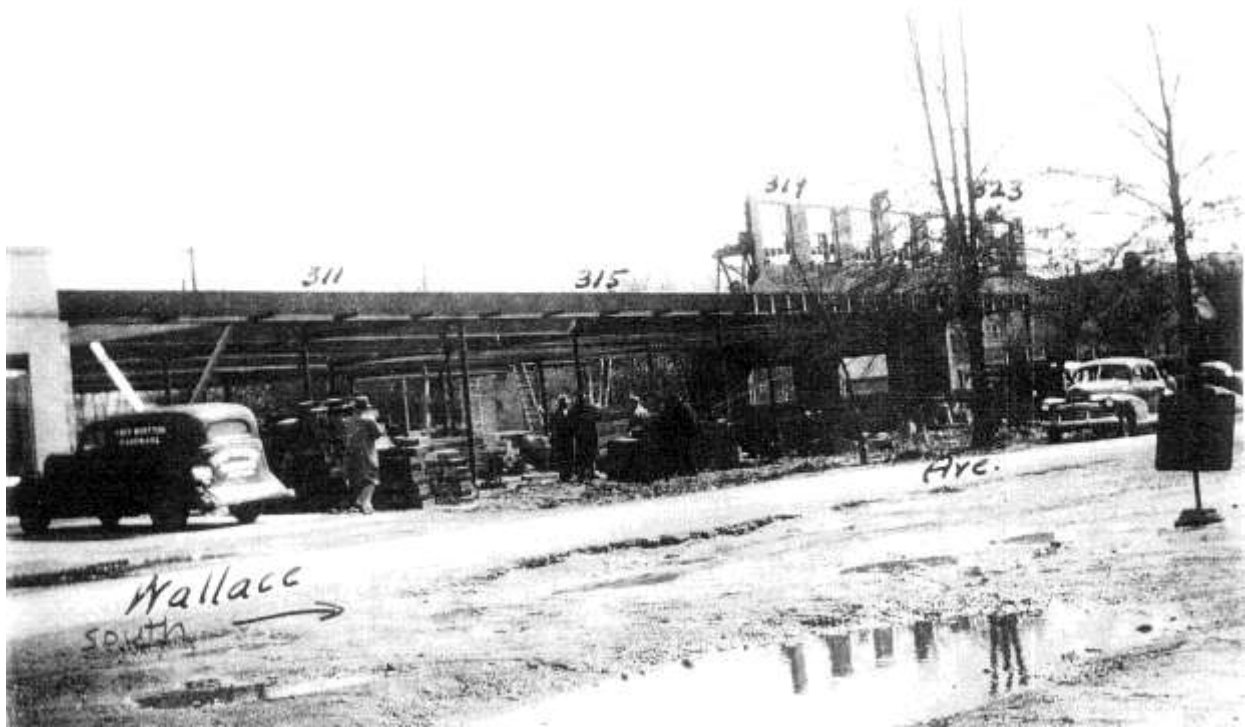
Courtesy of *St. Matthews, The Crossroads of Beargrass*, by Samuel W. Thomas, 1999. Caption- Intersection of Wallace and Wilmington Avenues, early 1950. Planning and Zoning Commission file ZV 4-5OU, Jefferson County Historic Preservation and Archives.



St. Matthews & Surrounding Community:

1950

Courtesy of Bluegrass-St. Matthews Historical Society:



March , 1950, Current strip stores

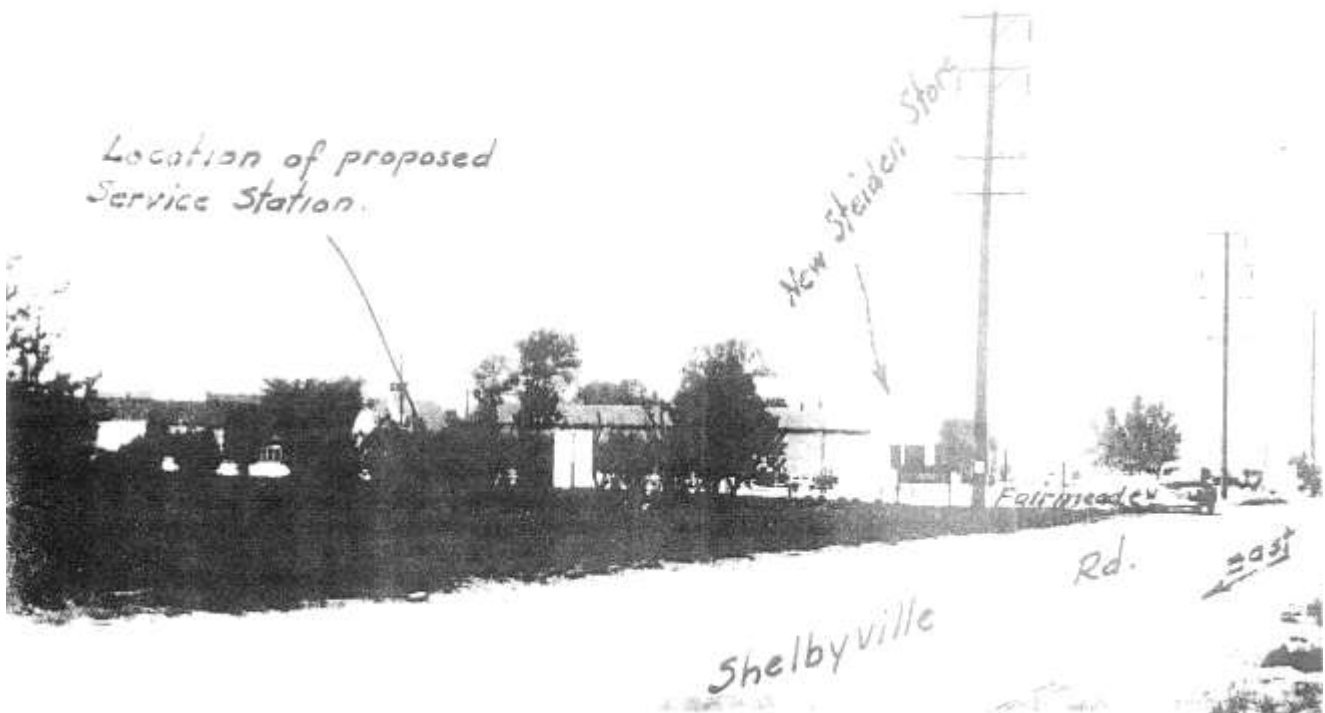
Still serving 10 years later (for those who remember) July, 1950



St. Matthews & Surrounding Community:

1951

Courtesy of Bluegrass-St. Matthews Historical Society:



May, 1951, Service Station opened by Robert "Bob" Schulten (died 2008), who sold to Al Ring, becoming Al Ring's American Service

Pookman Drugs on corner, canary Cottage on down the block, September , 1951



St. Matthews & Surrounding Community:

1951 and on

Courtesy of Al Ring collection:

In 1951 the subdivision of Kinglan consisting of two streets Kinglan & Brookview, was started off of Rudy Lane. The pictures of the home being built was for Clinton & Charlotte Ring where Al & Bob Ring grew up. Many alumni from Waggener grew up in this neighborhood.



St. Matthews & Surrounding Community:

1951 and on

Courtesy of Al Ring & various Lair's.

In 1951 the subdivision of Kinglan consisting of two streets Kinglan & Brookview, was started off of Rudy Lane. A few of the Waggener alumni that lived there are shown below.

John, Bobby & Betsy Porter



Jack & Bonnie Smith



Jim Jorgensen

(61)



Judy Dillion



Perry & David Chick

(61)

(60)



Sabra Yerkes



Grace Evans, teacher from

(60)

Waggener.



1955- Harvey Yerkes standing, Paul Johnson, Jimmy Jorgensen and Bob Ring with my dog Snowball



Judy Ruff & Joyce Billings, not shown Janet, Ralph and ????. Billings. These students went to Catholic schools.

St. Matthews & Surrounding Community:

1951 and on

Courtesy of Al & Bob Ring:

In 1951 the subdivision of Kinglan consisting of two streets Kinglan & Brookview was started off of Rudy Lane. The pictures of the home being built was for Clinton & Charlotte Ring where Al & Bob Ring grew up. These photos taken in neighborhood from 1952 to 1954.



Kinglan Subdivision



501 Kinglan Road



Al & Bob Ring



Al with football



Bob with football



1951, street being built



Al's interest in cars especially fast one's came early. Jim Jorgenson and Al used to race down the hill.



Courtesy of Al Ring collection.



**MEMBERS OF THE ST. MATTHEWS
VOLUNTEER FIRE DEPARTMENT**

- Fire Prevention Week -

Bottom row: Allan McNalley, George Westwood, Pete Blackwell, Marty Rueff & Al Haerberlin.

Middle row: Phil Schneider, Billy Smith, Jr., Dan Sullivan, Jr., John Kaster, Denny Engnehl, Bob Brenzel & Melvin Schrode.

Top row: William Medina, Jim Weixler, Wells Meyer, Unknown, Unknown, Melch Zehnder, John M. Monohan, Jr., Dick Wheeler, Jack Monohan, Ed Foley, Marty Kamer & Joe Kempf.

This wreck took place in front of the City of Richlawn on Shelbyville Road. September 1952.



St. Matthews & Surrounding Community:

About 1951

Courtesy Sandy Thomas (61):

Picture taken at my grandparents, 4025 Norbourne Boulevard, around 1951. That's Sandy Thomas (61), his dog Trigger and his Schwinn.



Courtesy of Al Ring collection.

New St. Matthews Fire Department Fire Station



The St. Matthews Volunteer Fire Department moved into its new building on St. Matthews Ave. Tuesday night. After looking the building over, moving plans were being discussed by: left to right, Firemen Henry L. McCoy, 3543 Nanz Ave.; John V. Kaster, F-8, Green Tree Manor; Richard Wheeler, 3722 Lexington Road; and Captain J. P. Terry, 119 Ridgeway, who is also on the department's board of directors. Behind the three overhead doors, the new 50x75 ft. building will accommodate five pieces of fire equipment, and has room space for the office, showers and lockers, kitchen, and meeting room. John Monohon, Jr., is chief of the department.



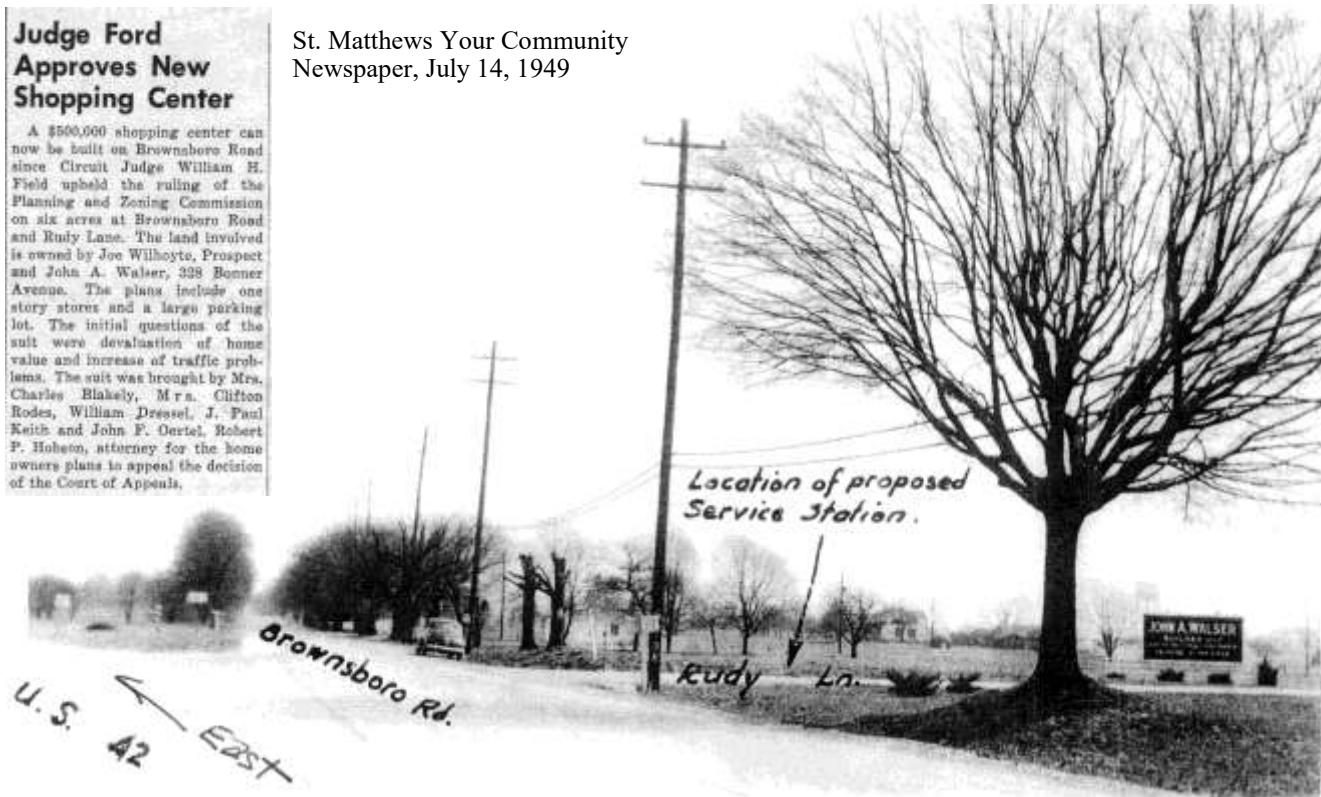
Courtesy of St. Matthews, 25 Years a City Two Centuries a Community, Caption-A soggy St. Matthews Avenue after a heavy rain in 1952.

Courtesy of Bluegrass-St. Matthews Historical Society:

Judge Ford Approves New Shopping Center

A \$500,000 shopping center can now be built on Brownsboro Road since Circuit Judge William H. Field upheld the ruling of the Planning and Zoning Commission on six acres at Brownsboro Road and Rudy Lane. The land involved is owned by Joe Wilhoite, Prospect and John A. Walser, 328 Bonner Avenue. The plans include one story stores and a large parking lot. The initial questions of the suit were devaluation of home value and increase of traffic problems. The suit was brought by Mrs. Charles Blakely, Mrs. Clifton Rodes, William Dressel, J. Paul Keith and John F. Oertel, Robert F. Hobson, attorney for the home owners plans to appeal the decision of the Court of Appeals.

St. Matthews Your Community Newspaper, July 14, 1949



Site of Brownsboro Shopping Center and Beverly O’Nan’s father ran an American Oil (Pan Am) Service Station here. March, 1952

Just east of Fairmeade Road, boys would ride their bikes here to savor the sights and smells “no goils allowed” September, 1952



Courtesy of Elizabeth St. Clair Skiles (60)

AL,
 FOR THE LONGEST TIME I
 HAVE BEEN LOOKING FOR PEOPLE
 THAT WENT TO ANN AKERS
 DRAMATIC ART SCHOOL IN
 ST, MATTHEWS, SO MANY
 OF THE CLASS OF 60 WENT
 THERE, HAVE YOU EVER
 RAN ACROSS ANY INFORMATION
 ON THIS????? THE ONLY NAMES
 THAT ARE IN THIS PROGRAM ARE
 SOPHIE HARNED, AND MYSELF
 BUT ALOT OF OTHER PEOPLE
 FROM GREATHOUSE AND WAGGENER
 WENT THERE, SHE WAS ON
 GRANDVIEW AVE IN HER BASEMENT
 EVERY DAY AFTER SCHOOL.

CAN ANYONE HELP?????

ANN HARDIN AKERS

Presents

HER CLASSES

in

PLAYS AND SKITS

CRESCENT HILL WOMAN'S CLUB

May 27, 1952 — 7:45 P.M.

Pianist—Mrs. John Carroll Assistant—Mrs. Kendrick Siems

SUGAR PLUM MINSTREL

Master of Ceremonies.....	Steven Ray Pierce
Miss Bonbon.....	Marty McDonald
Miss Lollypop.....	Catherine Kendrick
Miss Sugar Plum.....	Mimi Thompson
Miss Marshmallow.....	Sandee Frockt
Miss Peppermint Stick.....	Joan Sonne
Miss Gumdop.....	Ann Crush
Mr. Licorice.....	James Smith, Jr.
Miss Party Mint.....	Barbara Kaenig
Miss Chewy Taffy.....	Cathy Falkenstein
Miss Butterscotch.....	Phyllis Kerr
Mr. Chocolate Drop.....	Paul Bergner
Miss Chocolate Bar.....	Diane Beck
Mr. Jelly Bean.....	Steven Ray Pierce
Dialogue—Sally Mercke.....	Janet Nell Green

TOM SAWYER—Bill Brown, Richard Kenton McClure II, Eric Bruce Neikirk

PENROD—James Matthew Walker, Stephen Frockt, Eric Wurmser, Jerry L. Bizer

ALICE N WONDERLAND—Janet Lynn Chambers, Carol Merritt

JUST IMAGINE—Dotty Lou Danak, Martha Kendrick, Carol Jean Stuecker, Susan Gaile Fox, Nancy Kerr, Paula Kay Givan, Peggy Pergem, Mary Louis Goodfriend, Sally Mercke

PULLMAN DRESSING ROOM—Sara Wooten, Cynthia Rush, Carol Sturro, Janet Smith, Nancy Campbell, Sue Rose, Julie Couper, Barbara Joyce Mann

MONOLOGUE—Janet Nell Green

CINDERELLA—STEP SISTERS—Barbara Dee Wellnitz, Kathleen Franck, Betsy St. Clair

Step Mother.....	Jeanette Caswell
Cinderella.....	Sophie Harned
Fairy Godmother.....	Nancy Kerr
Prince.....	Fred Stutzenberger
Courtier.....	Bill Duncan
Queen.....	Susan Gaile Fox

KY. PHILOSOPHY—Eric Bruce Neikirk

VOGUE—Dotty Lou Danak, Paula Kay Givan, Betty St. Clair, Martha Kendrick, Nancy Kerr, Susan Gaile Fox, Carol Jean Stuecker, Mary Louis Goodfriend, Diane Beck, Peggy Pergem

Courtesy of Maggie Huber Westland:



Two photos, of 3929 Elmwood Avenue (Maggie Huber Westland's home), taken sometime around 1952. The first shows the large back porch, and if you look carefully, on the left is the cellar door which led in and out of the basement. You had to push it up to get out. Our old ringer washing machine was in the basement, and we came out that door with wet laundry in baskets. The drying lines were strung from the mulberry tree to a post further back in the yard. I am sitting on the steps with Gerry Wilder who lived two doors down the street. Ellen and Billy Rice lived in the house just to the right in this photo.

The second photo was taken on the sidewalk in front of our house. The first child on the left, I think is Billy Rice. I am the girl on roller skates (Maggie Huber Westland) and the next small boy is Gerry Wilder. On the bike are Henry and John Burt, and to the far right is Stanley Kimmel.



The house where I grew up at 3929 Elmwood Avenue had been on the edge of a farm when we moved there in the summer of 1945. The prior owners had raised chickens in the garage, and there was a little opening at the back where they could get out in the yard to forage for food. I used to crawl in and out of the "chicken hole", not realizing until I went to medical school and tested hugely positive for histoplasmosis that those chickens had immunized me against that nasty disease. Here is a photo of my sister Kathy and me on our swing set that year. This was before there were houses on Brookfield. In fact, there were still occasional livestock roaming back there for several months before the building began.



St. Matthews & Surrounding Community:

About 1952

Courtesy of Maggie Huber Westland:

Here are three photos from a Halloween Party held at my house. They are taken in front of our next door neighbor's (the Eifler's) place. Unknown year.

The people are, at top left from the left: Jeannette Caswell, Ellen Rice, Maggie Huber, Susan Shawler. top right from the left: Susan Meade, Peggy Bloom. bottom from the left: Phyllis Curtis, Sue Evans, Pam Ferguson, Jerry Lynn Seekamp, Norma Heick.

Here is a memoir about Halloween on Elmwood Avenue.

Maggie

Halloween was a local affair in the 1940's and 50's. We never went beyond our own block of Elmwood, and we knew all the people whose doors we knocked upon. People made elaborate home made things like sticky popcorn balls. Sometimes we got hard candy, chewing gum, or even practical things like apples or tooth brushes. Once or twice, money. When I said "Trick or Treat" to Mr. Heideman one year, he said he thought he would like a trick, and I decided to stand on my head! Once we went to the Petrakos house at the very end of the street. They never put the light on, and we were scared. When Mrs. Petrakos opened the door she was very surprised. She had never celebrated Halloween in her native Greece, and didn't know she was supposed to give us food. We explained the tradition and she invited us into her kitchen for a big slice of fresh baked cake!



St. Matthews & Surrounding Community:

About 1952

Courtesy of Maggie Huber Westland:

Here are two photos, one with me and Steve Monohan (at the dance at Wildwood CC), and another of three neighborhood boys in my front yard. The one on the left is Steven Monohan, in the middle, Billy Rice, and on the right Roger Rieger.

I don't remember who the other couple are at the dance, but I think it is interesting that us girls are sitting together and the boys are on the periphery. That's how it was when we were 12 or 13 years old.

Unknown Dates



Note: Doug and Steve Monohan lived 3909 Elmwood Avenue, Their father was John M. Monohan, Jr. St. Matthews Volunteer Fire Department Chief. Steve died at a young age in a tragic accident. Doug Monohan is married to Margo Tabler a Waggener Alumni, they live in Atlanta, Georgia. Doug graduated from Trinity.

NOTE FROM DOUG MONOHAN: I don't know if you have a date for that picture, but, it was taken in about 1950 on the Huber's front lawn. Billy Rice, in the middle, lived next door to the Huber's (to the left) and the Reiger's lived next door to the Rice's (to the left). Huber's house should be about 3927 (3929) Elmwood Ave. And Yes, I have seen that picture before....but its been 50 plus years ago.

We always called "Maggie" Margarete. I've never known her as "Maggie" Her parents were lone time residences on Elmwood as were Mother and Dad. Two house up Elmwood were the Wilder's. Frank Jr. started and ran Wilder's Electronics, which was on Chenoweth Lane for a long time. Across the street was Marsha Rodman's home and also her Grandparents home who were also the Grandparents of Denny Rodman. I don't know if you remember Garry Morris, however his house was on the corner of Elmwood and Chenoweth Ln., and, had a Chenoweth Ln. address number. The Burris's, Nick and Jack lived next door to us at 3911 Elmwood. Mother and dad lived at 3909 Elmwood.

Arterburn House Calls To Mind Old Realty Prices

Ghosts of low prices in real estate haunt the premises of a 149-year-old home on the Shelbyville Road.

Situated on a lot 30 feet by 150 feet is the old Arterburn home built in its entirety from materials taken off the land. R. J. Garrene, realtor who handled the sale of the property said that property in the St. Matthews area where the old Arterburn house stands has increased in value from between seven and ten dollars per front foot to \$250 per front foot in 10 years.

"Mr. Arterburn once owned 3,000 acres of land between the Taylorville Road and Brownsboro Road," Mr. Garrene said.

According to the realtor, the entire Arterburn house was cut from walnut, and the rest of building hit around five or six thousand dollars.

"All the homes in St. Matthews are new ones," Mr. Garrene said. "That fact helps make people want to move out to an area like St. Matthews. Besides we have no blight district here, like factory sections."

Garrene pointed out one of the big trees in the front yard. "That tree was brought over from Japan and transplanted in Kentucky. It's a Japanese tulip tree and it blooms in the spring," he remarked.

Present owner of the 149-year-old Arterburn home is Mr. Lena Owens.



R. J. Garrene, realtor, takes a look at the 149-year-old Arterburn house, now owned by Mrs. Lena Owens. Property values in St. Matthews have skyrocketed in the last ten years. Lots out in St. Matthews used to sell from seven to ten dollars per front foot, Garrene said.

Courtesy of Maggie Huber Westland:

Memories

Hi Al,

Here are some memories about places and happenings I remember from my childhood in St. Matthews. Maggie

Every Sunday, my family would stop at Plehns Bakery on our way home from Mass. It was so hard to wait in line to get a number, and then to wait again for that number to be called. After fasting from the night before for Holy Communion, I remember the excitement of getting to choose between fruit stolen covered in sweet white icing, jelly filled doughnuts, or huge cream horns. Sometimes there were nutty bear claws, or chocolate éclairs behind the glass display counters. Plehns was heaven on earth!

Once when my Daddy took me for a treat at his friend's ice cream parlor (what was it called??)... the owner told me I could order any flavor I wanted, and if he didn't have it, he would make it for me. I ordered licorice. He said that would take a while, so to come back in two days. We went back, and sure enough, there it was, ice cream as black as coal nuggets, with the sweet dark taste of anise.

Holy Trinity Catholic Church had a wonderful festival every summer. The best thing was hot juicy bratwurst on fat brown buns with mustard. My Dad got a beer, but I had to have lemonade. One year I won a dozen metal ice tea glasses in all the colors of the rainbow when the big spinning wheel landed on my lucky number 13. I had only bet a nickel! We played Bingo, and my sister won a box of fancy chocolates with the names of each piece written on the lid. She shared them with me and I got the chewy caramels and the ones with cherry liquid in the center because she didn't like to get messy.

We shopped at Bacons Department Store for ordinary clothes like summer shorts and underwear, but when we needed a really important outfit, we took the bus downtown to 4th Street and shopped at Stewarts. I made my own dress for the Senior Prom from yard goods I bought there.

My Mom used to take my sister and me to The Canary Cottage for lunch on special occasions. We ate exotic things like cream cheese and olive sandwiches, or shrimp cocktail served in chilled glasses. We also went to the soda fountain at the local drugstore (? St. Matthews Pharmacy??). My favorite order was a cherry coke made from scratch out of coke syrup which was stored in large glass bottles behind the counter. Sometimes I got an ice cream soda with real whipped cream on the top, and a bright red maraschino cherry too.

When we were sick we went to see Dr. Bizot whose office was up a flight of wooden stairs outside the building on the corner of St. Matthews Avenue and Breckenridge Lane. He had a new-fangled machine called a fluoroscope, that could look right into your insides. We also went to a shoe store with fluoroscope machines that were used to check whether there was enough room inside new shoes for our toes to grow into. It's amazing how little we worried then about the amount of radiation exposure we were getting.

In the spring each year my Daddy would take us to pick wild strawberries at the end of Chenoweth Lane across Brownsboro Road on the way to Indian Hills. These were small berries, but the sweetest I have ever eaten. My Mom would make them into strawberry short cake with home made whipped cream. The cream was delivered to our door in glass bottles with cardboard tops, along with milk, butter and sometimes eggs.

My Daddy had a home woodshop in our basement. He made lots and lots of bird houses which he put at the St. Matthews Hardware Store on consignment. I remember helping him carry them into the store, where they were displayed on the highest shelves, but haven't a clue whether he ever sold any of them. The inside of that store was a wonderful assortment of loose nails, screws, washers, and every imaginable type of tool. It was dark in there, and smelled of wood shavings and cigarette smoke.

I used to walk down St. Matthews Avenue to Holy Trinity School, past Gilman and Massie Avenues, down to the RR track where the Palmer Ball Factory spewed out nasty smoke across from the Bacon's parking lot. There was a big playground and athletic field at the back of the school with a round-a-bout that bounced up and down as well as going around. I think the church picnics were held back there too. The other event near the RR tracks in the mid 1940's was the potato festival. What I remember most about that was the pinwheels and sparklers and overhead fireworks they had at night. I went in my PJs to see them and had to go straight home to bed when it was all over.

Do you remember St. Matthews Feed and Seed store on Chenoweth Lane. That was just around the corner from Elmwood Avenue and a good place to hang out for the neighborhood kids. They sold mostly garden supplies and animal food, but also had small penny candies and chewing gum machines. I think it was run by Bonnie Davis's family. The Davis's lived at the end of Elmwood.

When I was in High School, the favorite place to go for a burger was The Ranch House on Shelbyville Road, one of the original drive ins with the little square boxes to talk through which were set up next to small aluminum trays that pulled out from a post. It seemed a long way out of town, and very grown up to be able to go so far. It was a popular date place, as it was just down the street from the local Drive In Movie Theater. After school, girls used to go to the Fairmeade Pharmacy on the south side of Shelbyville Rd just past Hubbard's Lane, where we could get ice cream or shop for new lipsticks or hair bands. Sometimes we went on dates to Pryors Restaurant, which was considered by some of us to be a "fancy" grown up restaurant.

Courtesy *The Voice Of St. Matthews:*

Arterburn House Calls To Mind Old Realty Prices

Ghosts of low prices in real estate haunt the premises of a 140-year-old home on the Shelbyville Road.

Situated on a lot 30 feet by 150 feet is the old Arterburn home built in its entirety from materials taken off the land. H. J. Garrene, realtor who handled the sale of the property, said that property in the St. Matthews area where the old Arterburn house stands has increased in value from between seven and ten dollars per front foot to \$250 per front foot in 10 years.

"Mr. Arterburn once owned 3,000 acres of land between the Taylorville Road and Brownsboro Road," Mr. Garrene said.

According to the realtor, the entire Arterburn house was cut from walnut, and the cost of building hit around five or six thousand dollars.

"All the homes in St. Matthews are new ones," Mr. Garrene said. "That fact helps make people want to move out to an area like St. Matthews. Besides we have no blight district here, like factory sections."

Garrene pointed out one of the big trees in the front yard. "That tree was brought over from Japan and transplanted in Kentucky. It's a Japanese tulip tree and it blooms in the spring," he remarked.

Present owner of the 140-year-old Arterburn home is Mr. Lena Owens.



H. J. Garrene, realtor, takes a look at the 140-year-old Arterburn house, now owned by Mrs. Lena Owens. Property values in St. Matthews have skyrocketed in the last ten years. Lots out in St. Matthews used to sell from seven to ten dollars per front foot, Garrene said.

February 28, 1952

Announcing
The
NEW LOCATION OF
Norman Glass Co.

OPENING ON OR ABOUT MAY 15TH,
4206 SHELBYVILLE ROAD

Featuring A Complete New Line Of

● Pictures	● Pictures Framing
● Mirrors	● Table Tops
● Glazing Of All Kinds	

DIAL BE. 2612



With standing so tall on Arterburn grounds is the Japanese tulip tree. One of the early Arterburns imported the tree and its yearly blooms are evidence of the successful transplanting.

May 8, 1952

AT BITTNER'S ...

Easy to take... anywhere... anytime...

RCA Victor

Portable Phonics

The "Wink-buster" "Soundal" Model FR500. It has powerful speakers... (text partially obscured) ... \$39.50

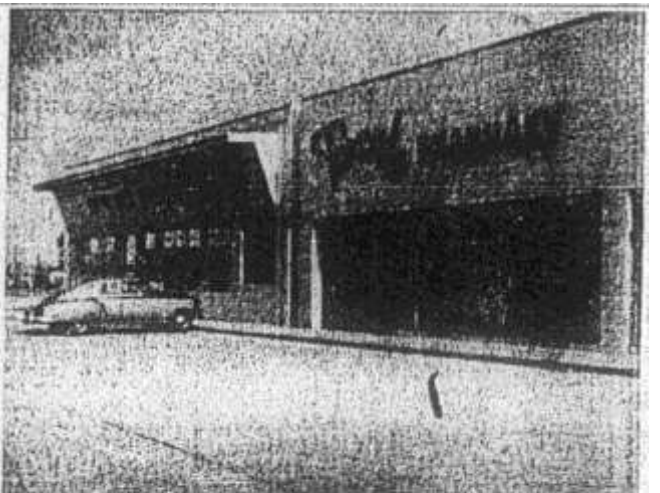
814 Model 5000

814 Model "Phonics" Model 814. It has two 4" speakers... (text partially obscured) ... \$27.50

They're the Pick of the Portables.

BITTNER'S

The Largest Suburban Retail Dealer
2712 LEXINGTON ROAD Taylor 3546



First of a series of new stores to open in the Fairmeade Shopping Center, in addition to Steiden's, is the Fairmeade Pharmacy. A reception will be held at the store Thursday night, prior to the Friday opening of the store. —Frederick Beck Photo

May 15, 1952

Courtesy *The Voice Of St. Matthews:*

PHARMACY
Tomorrow... **TODAY!!!**
SPECIAL SURPRISES
Come... See

Baby
Toys, Health Needs, Tees, Gifts

FOUNTAIN and LUNCH
Serving fountain operated, fountain coffee, delicious ice cream... and a special menu of quality food.

SMOKES and SWEETS
Specially selected tobaccos... and the smoking accessories.
RED CIGARETTES—Winston's, Scheriff's, Doublets, when having coffee.

PET and ANIMAL HEALTH
Pet Foods, Health Needs, and Accessories.
Animal Health Needs for the Home.

WORMS AND STATIONERY
Greetings Cards

TOYS
For all ages of your household.
Educational Toys. Quality Toys at reasonable prices.

May 15, 1952

GIL MUELLER'S **GRAND OPENING** **BARGAIN DAYS**
CONTINUE THROUGH SATURDAY, MAY 24th

No Money Down!
ONLY \$1.25 WEEKLY BUYS
2 New **GOOD YEAR** DEPENDABLE MARATHON TIRES \$12.95 EACH

TRADE-IN SALE
Full List Price for Your Old Tires...
NEW **GOOD YEAR** SLOW-MO-T-SAFETY LIFEGUARD SAFETY TUBES UP TO 4.75

LUBE JOB GIVEN
WITH EACH **OIL CHANGE** AT NO EXTRA COST

\$6.00 TRADE-IN ALLOWANCE FOR YOUR OLD BATTERY WHEN TRADED ON A **GOODYEAR** BATTERY

Special! WHEEL BALANCING 98c PER WHEEL

PLENTY OF FREE PARKING SPACE
GIL MUELLER SALES & SERVICE
407 FRANKFORD AVE. PHONE RE. 315

May 22, 1952

WALL PHONES
Mandatory equipment for PERSON TO PERSON calls.

Fascinating • ALL STEEL • Educational

They Actually Work!

Call it a toy, if you like... but it actually works. It's the ideal, low-cost battery operated phone system for home or office use. Youngsters will be thrilled with it. You'll enjoy using it, too. A strong, sturdy, dependable set for only **4.50 SET**

It's easy to STOP at the **MODEL SHOP!**
KY. MODEL SHOP
—In the Wallace Center Building—
3805 Wilmington—St. Matthews TA. 2358

May 22, 1952

Grand Opening
WILL SALES
APPLIANCES JEWELERS
3730 Lexington Rd. St. Matthews
Thursday-Friday-Saturday June 5-6-7

FREE PRIZES
NOTHING TO BUY—JUST COME IN

It is that easy to win any one of these valuable prizes. All you have to do is come in and register at our new St. Matthews store, 3730 Lexington Road. There is nothing to buy... nothing to give... all you have to do is sign your name. Drawing 9 p.m. Saturday, June 7. You do not have to be present or drawing is on TV.

★ 1st Prize—**FRIGIDAIRE** Automatic Washer

★ 2nd Prize—Sparkling **DIAMOND RING**

★ 3rd Prize—Admiral Radio-Phone Combination

★ 4th Prize—Grippe White Watch

★ 5th Prize—Parlor \$1 Gold Cup Set

★ 6th Prize—Radio in Full and Floor Set

★ 7th Prize—Radio in Full and Floor Set

★ 8th Prize—Radio in Full and Floor Set

★ 9th Prize—Radio in Full and Floor Set

★ 10th Prize—Radio in Full and Floor Set

HERE ARE SOME OF OUR NATIONALLY-FAMOUS BRANDS

- ★ WATCHES: Bulova, Elgin, Hamilton, Waltham, Zenith
- ★ SILVERWARE: 121 Export Silver, Community, Coronado, 1445 Export Silver, 1445 Export Silver
- ★ CLOCKS: G. E., Hamilton, Waltham, Zenith
- ★ PENS: Montblanc, Parker, Sheaffer
- ★ LIGHTERS: Zippo, Rembrandt
- ★ COMPACTS: Bulova, Elgin, Hamilton, Waltham, Zenith
- ★ WATCH ATTACHMENTS: Bulova, Elgin, Hamilton, Waltham, Zenith
- ★ MEN'S JEWELRY: Gold, Silver, Platinum, Waltham, Zenith
- ★ LUGGAGE: American, Hamilton, Waltham, Zenith
- ★ ACCESSORIES: Crown, Elgin, Hamilton, Waltham, Zenith
- ★ COSTUME JEWELRY: Crown, Elgin, Hamilton, Waltham, Zenith
- ★ TOASTERS: Hamilton, Waltham, Zenith
- ★ SHAVERS: Hamilton, Waltham, Zenith
- ★ TYPENWRITERS: Hamilton, Waltham, Zenith
- ★ COFFEE MAKERS: Hamilton, Waltham, Zenith
- ★ MIXERS: Hamilton, Waltham, Zenith
- ★ ELECTRIC FANS: Hamilton, Waltham, Zenith
- ★ DEEP FRYERS: Hamilton, Waltham, Zenith
- ★ ELECTRIC IRONS: Hamilton, Waltham, Zenith
- ★ REFRIGERATORS AND FREEZERS: Hamilton, Waltham, Zenith
- ★ GAS STOVES: Hamilton, Waltham, Zenith
- ★ WASHERS AND DRYERS: Hamilton, Waltham, Zenith
- ★ TELEVISION: Hamilton, Waltham, Zenith
- ★ RADIOS: Hamilton, Waltham, Zenith
- ★ ELECTRIC RANGES: Hamilton, Waltham, Zenith

Will Sales
APPLIANCES 3730 Lexington Road ST. MATTHEWS JEWELRY

June 5, 1952

Courtesy *The Voice Of St. Matthews:*



YOUNG DO-GOODERS from Narbourne Estates display announcement of their carnival held June 19 at which time they raised \$29.10 for the Kasair Crippled Children's Hospital. Pictured are: Janie Dempsey, Marcia Ann Mueller, Marla Brandon, Ann Finnegan, Louise Leavell and Linda Slaten.

July 3, 1952



Johanna Hauschildt, 12, daughter of Mr. and Mrs. John Hauschildt, 225 Monahan, and Linda Ann Shaaf, 9, daughter of Mr. and Mrs. Earl Shaaf, 227 Monahan, turn over \$31 to the Fresh Air Fund, made at a carnival they held in their adjoining backyards Wednesday, July 2.

July 10, 1952

60 Villagers Get Acquainted At Coffee Party

Residents of Brownsboro Village No. 3, consisting of all of Lotis Way and Sprite Road, were guests at a "Get Acquainted Coffee Party" Friday, Sept. 12, at 10:00 a.m. The committee originating the idea and planning the "coffee" were:

Mrs. Kenneth Harbolt, 419 Lotis Way; Mrs. John M. Frankel, 316 Lotis Way; Mrs. Charles W. Arnold, 410 Lotis Way; Mrs. Alfred B. McCreary, 413 Lotis Way.

Mrs. Kenneth Harbolt, 419 Lotis Way, graciously volunteered use of her home for the party. Name tags were worn by all.

Seven perfume door prizes, compliments of Frankel-Klapeke Drug Co., were given to the lucky guests.

In charge of bringing refreshments were: Mrs. Charles W. Arnold, 410 Lotis Way; Mrs. John M. Frankel, 316 Lotis Way; Mrs. Alfred B. McCreary, 413 Lotis Way; Mrs. H. A. Gowdy, 423 Oread; Mrs. F. S. Goodrich, 406 Sprite Rd.; Mrs. J. T. Reid, Jr., 414 Lotis Way; Mrs. Howard Pulham, 412 Lotis Way; Mrs. Peter H. Baker, 315 Lotis Way; Mrs. J. Darlington Raine, 314 Lotis Way; Mrs. E. W. Dozier, Jr., 411 Sprite Rd.; Mrs. Jesse E. Greenwell, 408 Lotis Way; Mrs. Harreld DeMunbrun, 407 Lotis Way.

Approximately 60 women attended, and a plan for future meetings was discussed.

September 18, 1952

St. Matthews & Surrounding Community:

1952

Courtesy Lynne Rae Milroy Wills (60):

Family moved from PA to 4027 Winchester Road in 1952. Later moved to a house on Knollwood. It is part of the Zachary Taylor Estate, in the apple orchard. These photos were taken in 1991 while visiting St. Matthews.



Courtesy Hunt Look & *The Voice Of St. Matthews:*



Hunter and Vera Look home at 3643 Warner Avenue around 1952.



What's England got that Cherrywood Village hasn't got? — Nothing, decided the city's younger set last week, so they staged their own coronation. Her Majesty, The Queen (usually known as Julia Ann Groot, 10-year-old daughter of Mr. and Mrs. Donald Groot, 4011 Elmwood) peeps out of the royal carriage at her subjects. Leading the royal parade across the Groot lawn is Her Majesty's Royal Guard, Mike Gladden, with sword in hand. Sitting in the front part of the carriage is the Royal Page Girl, Mary Cunningham. The gentleman with the loud shirt is the Archbishop, sometimes known as Walker Cunningham. Due to a breakdown in our cross-city wire lines, we are unable to bring you pictures of other important personages in the ceremony; namely, Princess Sharron Burwell, Royal Guardsman Steve Durbin, and ladies-in-waiting Margo Durbin, Sandra Coby, and Cynthia Gladden.

June 11, 1953

Courtesy *The Voice Of St. Matthews:*

THIS WAY to SANDERS CLEANERS



ALWAYS AMPLE FREE PARKING SPACE
QUICK, EASY ACCESS from Multiple East-Taylor Access just from Westport Road.

HAD STORE AND PLANT AT 1212 ST. MATTHEWS AVE.



SEVING THE GREATER ST. MATTHEWS AREA WITH *Beautiful Cleaning*

- DRIVE IN AND SAVE 10%
- MOISTPROOF CLEANING AT NO EXTRA COST.
- SAME DAY SERVICE
- HATS CLEANED & BLOCKED
- PICK-UP AND DELIVERY

SANDERS CLEANERS
1212 ST. MATTHEWS AVE. TAYLOR 443

So Convenient . . . It's Always Easy To Shop at the
Hubbard Lane Shopping Center



Webb's Drug Store
4221 Shelbyville Road, TAYLOR 3237
Expressly Filled Prescriptions
All Conditions

Norman Glass Co.
4221 Shelbyville Road, TAYLOR 3237
Picture • Picture Framing
Mirrors

Showers Shop No. 2
137 S. Hubbard Lane, TAYLOR 4114
Complete Stock of Quality Clothing and
Accessories for Men, Boys and Kids

Burdson Paint & Wallpaper
4224 Shelbyville Road, TAYLOR 4373
Interior Wallpaper Wallpaper
Benjamin Moore Paints

October 1, 1953



Papers were signed Friday through which the DeLaney Furniture Co. leased the above pictured building now under construction in St. Matthews, from the Wakefield - McMakin Realty Co., owner of the property. C. W. Jennings, of the Dahlem Construction Co., will supervise the construction.

October 15, 1953

DeLaney Furniture Coming To Fairmeade

First steps in the construction of a modern furniture store are underway in Fairmeade subdivision on Shelbyville Road this week.

To be occupied by the DeLaney Furniture Co. next spring, the St. Matthews store will become unit No. 3 in the company's business. The company expects to continue to operate its stores in Jeffersonville and at 1317 Bardstown Road. Dean DeLaney, proprietor, reported.

The new building is being built by the Wakefield-McMakin Realty Co., owner of the land, and has been leased to DeLaney. The Dahlem Construction Co. engaged to erect the building, started excavation work Friday. The property was zoned for commercial use in 1949.

With a 100 ft. frontage on Shelbyville Road just east of Fairmeade Road, the site of the new store has a depth of 225 feet and a width of 140 feet at the rear. In line with other Fairmeade commercial property, the building will be set deep on the lot to provide access and parking space in front of the store. Additional parking space has been plotted on the east side of the building, which will have an 86 foot frontage and a depth of 140 feet.

The first building in St. Matthews to be erected to house a furniture store, the new DeLaney building will become Kentucky's first two-level furniture store, designed with short ramps to eliminate the need for elevators and to make the entire store easily accessible by anyone.

To be air conditioned throughout, the interior will also feature modern furniture store

lighting and acoustical treatment. Roman brick with Indiana limestone trim has been selected to dress up the wide plate glass entrance on the front of the building.

"Since such a large percentage of our business has been done with people in the Greater St. Matthews area, we have been trying to get a satisfactory location in St. Matthews for some time," Mr. DeLaney told *The Voice Tuesday*. "We are most happy at the prospect of getting into this fine new building next spring to enable us to serve our St. Matthews - area customers even better."

Still a comparatively young business, the DeLaney Furniture Co. was founded in Jeffersonville in 1946. The company bought out the Old Colony Furniture Co. on Bardstown Road in 1952.

With a family background in the furniture business in Chattanooga, Tenn., Dean DeLaney moved to Louisville in 1934. He married a Louisville girl, Miss Mary Bailey, who is active in Girl Scout and church work. Residing at 23 E. Shevlin Road in Meadowview Estates, the DeLaney's have three children, Dean Jr., 14; Patricia Ann, 12; and John, 7. Young Dean and Pat attend Highland Junior High, and John is enrolled at Melbourne Heights school. The family attends Strathmoor Presbyterian Church.

(Editor's Note: More St. Matthews business news is in Section Two.)

St. Matthews & Surrounding Community:

1953

Courtesy of *St. Matthews, The Crossroads of Beargrass*, by Samuel W. Thomas, 1999. Caption-By 1953 Bauer Brothers was Jutt's, but Wurster's St. Matthews Hardware and Zehnder Brothers Creamery remained in family ownership. A & P and new Bacons filled out the block. By Gus Frank, University of Louisville Photographic Archives 94.17.003.



Courtesy of *St. Matthews, The Crossroads of Beargrass*, by Samuel W. Thomas, 1999. Caption-1953 On Shelbyville Road. St. Matthews School of Music operated by Mrs. Madge Terry Lewis occupied the second floor of building at right in the 1950s, while Pendergrass Chevrolet sold cars below. 94.17.012, University of Louisville Photographic Archives.

St. Matthews & Surrounding Community:

1953

Courtesy of *St. Matthews, The Crossroads of Beargrass*, by Samuel W. Thomas, 1999. Caption- Bob Colglazier's Ranch House, 1953 , Now site of McDonald's. Frozen Food Locker, popular in the 1940s, was located jut to the east. 77-53U, Jefferson County Historic Preservation And Archives.



Courtesy of *St. Matthews, The Crossroads of Beargrass*, by Samuel W. Thomas, 1999. Caption- Frankfort Avenue at intersection of Lexington Road, 1953, 94.17.002, University of Louisville Photographic Archives.

St. Matthews & Surrounding Community:

1953

Photo courtesy of *St. Matthews, The Crossroads of Beargrass*, by Samuel W. Thomas, 1999. Caption-Thurston Cooke Ford (Trinity High School's Alumni Hall) and Gil Mueller Auto Service (Standiford Field Car Sales), in 1953. ZV 120-53U, Jefferson County Preservation and Archives.

Courtesy of *St. Matthews, The Crossroads of Beargrass*, by Samuel W. Thomas, 1999. Caption-



Seiderman residence and outbuildings on Northwest corner of Thierman Lane and Shelbyville Road in 1953, 94.17.019, University of Louisville Photographic Archives.

Courtesy Alan Springer (61):



Alan Springer's 10th Birthday party at his parents new home in Brownsboro Village, St. Matthews, May 29, 1953. Left to right: Penn Watts, Nicky Burrice, Richie Stokes, Kenny Hauptli, Dean Springer and Alan Springer.

Courtesy of Bluegrass-St. Matthews Historical Society:

Strip of stores next to Webb's Drugs, Hubbards Lane & Shelbyville Road, (south side), July, 1953

